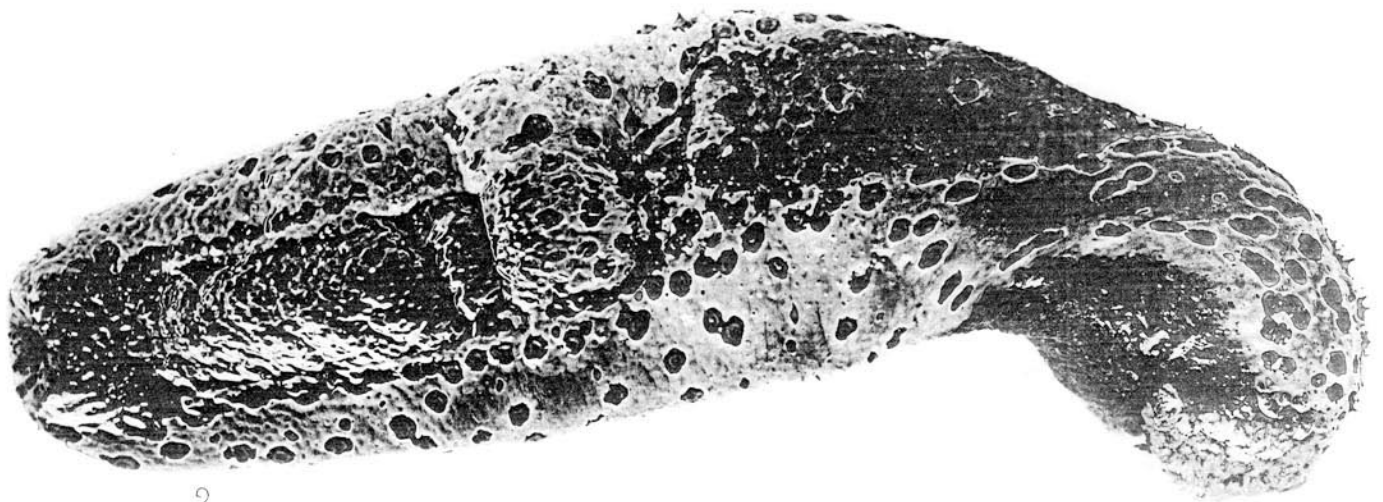


16. Small Lolly-fish, *Holothuria sanguinolenta*, n.sp. (Plate XXXIV., No. 1).—Body in extension elongate subcylindrical, tapering towards each extremity, highly flexible ; locomotive acetabula

forming a single series ; slender tactile papillæ developed abundantly throughout the dorsal aspect ; vent cylindrical, devoid of anal ossicles ; colour, purple black ; a dark red fluid exuding from the surface of the skin when the animal is handled roughly ; oral tentacles and ventral acetabula, black. Length when extended, twelve to eighteen inches. Habitat : Common on the outlying reefs of the Great Barrier system. Of but little commercial value. The muscular and connective tissues of this species are of much less firm consistence than those of the black, red, or teat varieties, and when cured the individual bodies are comparatively hollow and of light weight.



1.



2.

