

54. *HOLOTHURIA ONDAATJEL*, n. sp. (Pl. xxxix., fig. 3).

No calcareous spicules in bodywall.

Twenty tentacles; body elongated; suckers confined to trivium, where they are irregularly and rather thickly distributed; integument soft, rather thick; œsophageal ring delicate; Polian vesicle not long; no Cuvierian organs; genital tubes elongated, extending far back.

Colour—chocolate brown bivium, rather lighter on the trivium and tentacles.

The larger specimen is 100 mm. long, and its greatest diameter is 18 mm.

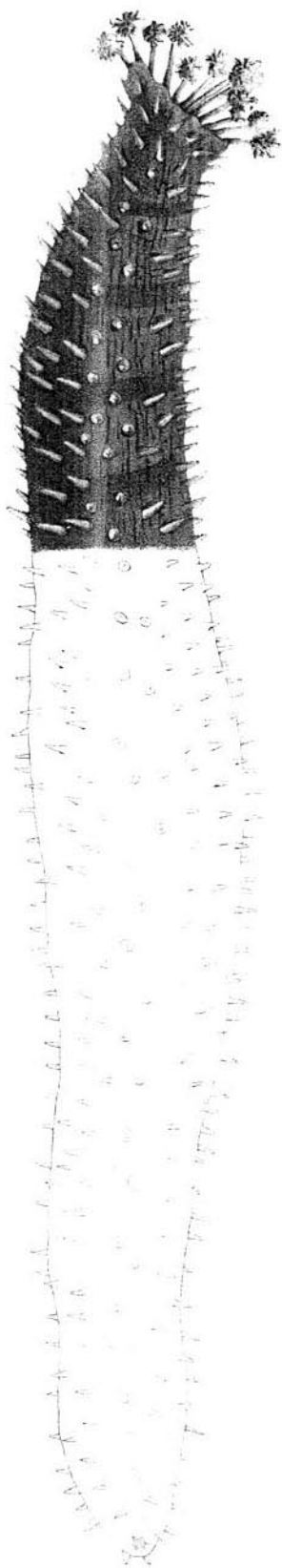


Fig. 3.

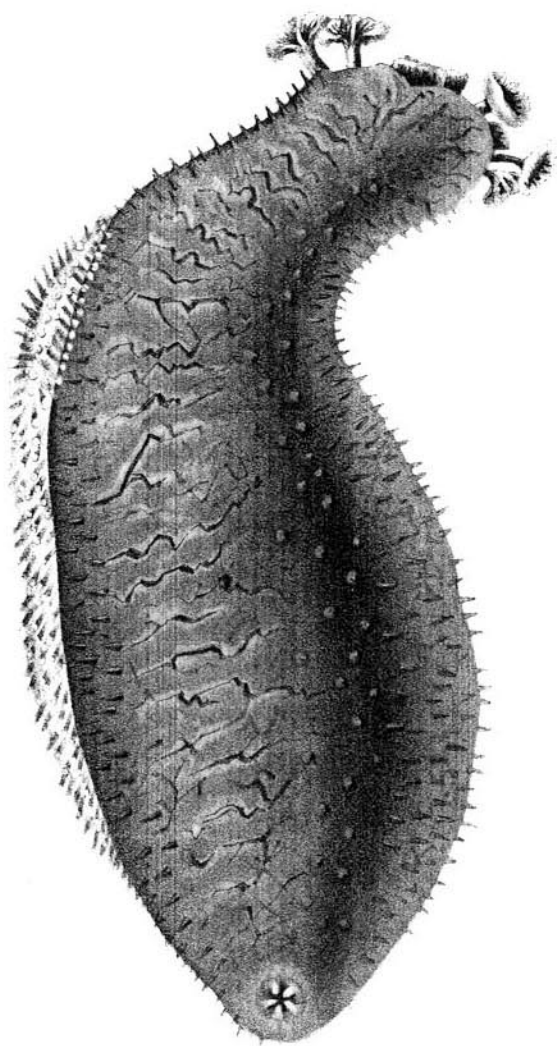


Fig. 1.

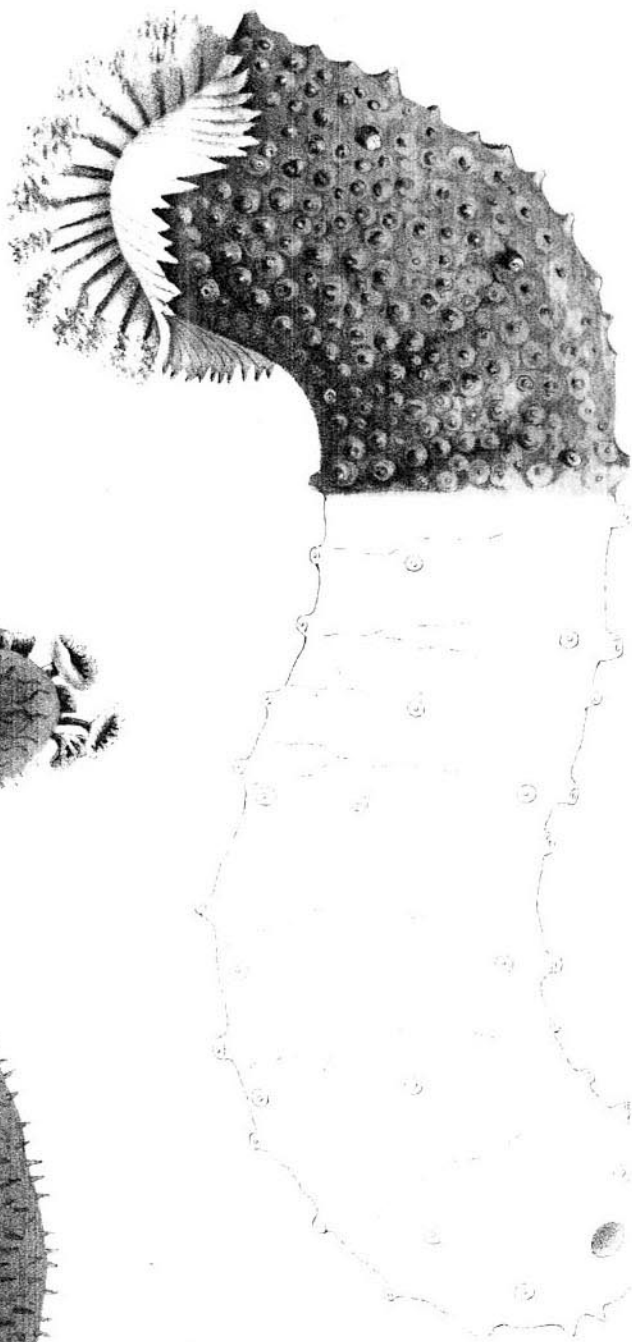


Fig. 2.