

7) *Holothuria monsuni* n. sp.

Diagnosis: Aspidochirote Holothurians with 20 tentacles. Adam-bulacral appendages: Tube feet scattered irregularly all over the body wall. Tentacle ampullae, respiratory trees, cuvierian organs and one bushy gonad present. One polian vesicle and one stone canal placed about 6 mm. posterior of the calcareous ring. Cloaca long and narrow.

Calcareous deposits of body wall: high and low tables and regular smooth six-holed somewhat fat buttons. In the tube feet supporting rods as well as high and low tables, the latter without foot plate in the terminal part of the tube-feet.

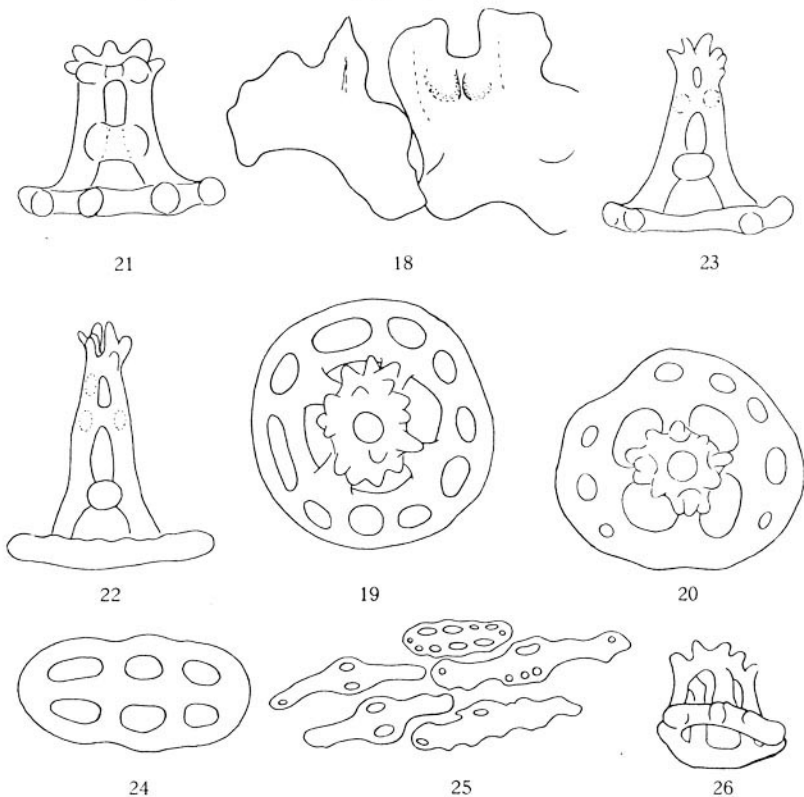
Locality: The tropical area of the Pacific.

Description: The single specimen at hand measures abt. 7 cm in length and 1.5 cm in diameter. It is curved, both ends being slender indicating a burrowing mode of life. The colour is purple grey, the purple colour originating from thin reticulating chromatophores. The whole body is covered with a layer of a brown rusty stuff, which by the instruments may be easily removed. The calcareous ring (fig. 18) consists of ten pieces of which the radials are distinctly larger than the interradials. The number of tentacles cannot be counted, but judging from the shape of the calcareous ring and the short tentacle ampullae there are twenty. The ringcanal is placed abt. 6 mm posterior of the calcareous ring. There is one large polian vesicle and a single stone canal which is running posteriorly. The gonads are undeveloped, but placed in a single tuft on the left side of the mesenterium. The respiratory trees are long and much branched, and cuvierian organs are present, they are short and bulb-shaped. The cloaca itself is narrow and two cm long.

The calcareous deposits of the body wall are tables and buttons. The main part of the tables are well developed large tables with a smooth rounded basal plate supplied with ten holes (figs. 19—20) and with a low thick spire with one cross beam and a large irregularly knobbed crown (fig. 21). Beside these tables there are some with a rather high slender spire and 3—4 cross beams and a little spiny crown. The buttons (fig. 24) are smooth, rather fat, and are supplied with 6 holes. Their margin is either smooth or faintly undulating.

In the tube feet there are usually rather many supporting rods

(fig. 25), but occasionally there are but a few ones close to the terminal plate. Besides there are many tables in the tube feet, and here especially many high tables. In the terminal half part of the tube feet the tables are more or less reduced and close to the terminal plate they form small nearly spherical bodies (fig. 26).



Holothuria monsuni n. sp. 18 calcareous ring, radial and interradial pieces ($^{10}/_1$). 19—23 tables, 24 button, 25 rods, from the tube-feet, 25 reduced table from end of tube-foot. 19—26 ($^{430}/_1$).

Remarks: This species resembles in several features *Hol. impatiens*, but due to the many high tables all over the body wall there is no reason to regard it as a variety of that species though I have no doubt that it is very closely related to *impatiens*.