

*Actinopyga serratidens*, n. sp.—Plate III., figs. 36–41.

One specimen from the lagoon inside the Reef, Galle. Length, 180 millims.

Colour of spirit specimen is brownish-black.

The tentacles are partly retracted, so that it is difficult to ascertain their exact number. There are, however, 20 tentacular ampullæ, so that there will also be 20 tentacles. The colour of the tentacles is dark brown.

The mouth is ventral, and is surrounded by a distinct brim formed by a folding of the integument. The anus is surrounded by five distinctly serrated teeth, each tooth being 3 millims. in length.

The pedicels are irregularly scattered over the ventral surface, showing no arrangement in rows. They are distinctly cylindrical with well-developed sucking discs. The dorsal surface is covered with papillæ, which are more slender than the

pedicels. They appear, in many cases, to have small rudimentary terminal discs, so that it is difficult to distinguish them from true pedicels. Both pedicels and papillæ are of the same colour as the general integument, so that they are not very conspicuous.

The specimen has a typical *Aspidochirote* calcareous ring.

There is one large Polian vesicle, 30 millims. long, and there are about eight stone canals attached to the dorsal mesentery.

The right respiratory tree is much larger than the left. This form also possesses Cuvierian organs.

The general body wall is very thick, about 5 millims. This is probably, to a certain extent, due to contraction.

Deposits:—Not very thickly scattered. They consist typically of a short straight rod with dichotomising ends (figs. 36–38). Sometimes the spicules are dumb-bell shaped or bone-shaped (figs. 39–41). The pedicels have no supporting rods, nor spicules of any kind, except a terminal plate. The character from which I have taken the specific name, viz., the serration of the anal teeth, is a very distinct one, and would serve alone to distinguish the species.



Fig. 36.



Fig. 37.



Fig. 38.



Fig. 39.



Fig. 40.



Fig. 41.



Fig. 42.

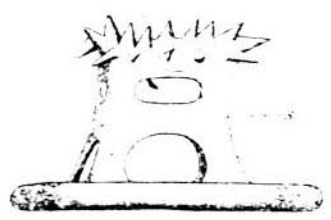


Fig. 47.

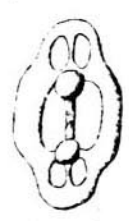


Fig. 48.

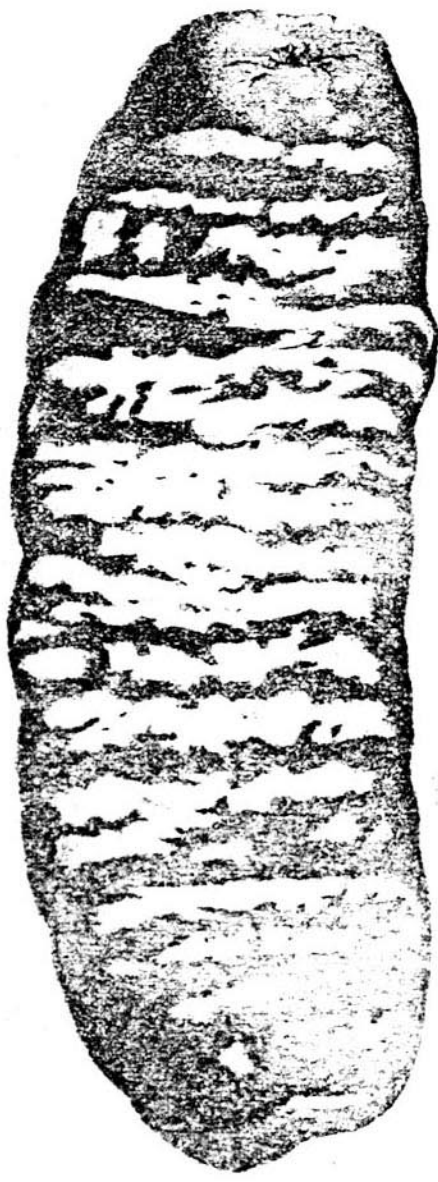


Fig. 46.

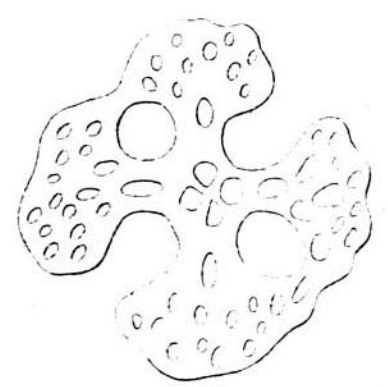


Fig. 43.

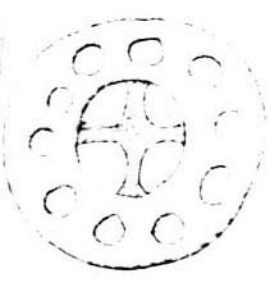


Fig. 49.

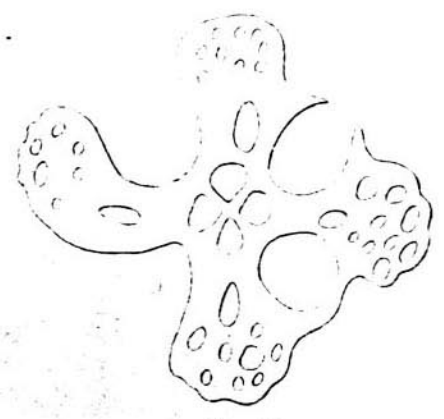


Fig. 44.

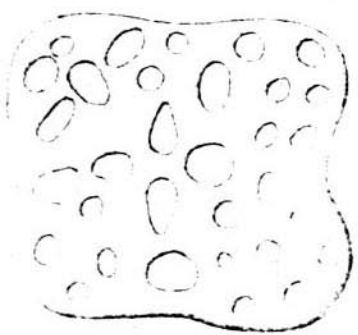


Fig. 50.

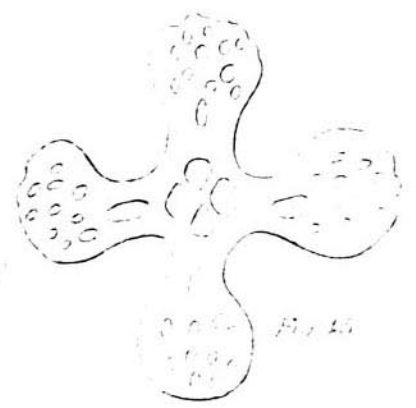


Fig. 45.