

2. **Actinopyga caroliniana** sp. nov. Pl. 13, Figs. 1-2.

Body subcylindrical, 8-10 cm long, slightly arched dorsally, flattened ventrally. Body wall thick and tough. Tentacles 20, peltate, yellow.

Ground color brown with lighter brown teat-like protuberances bearing papillae arranged in two distinct series along dorso-lateral side of individual. Other papillae, slender and long, scattered all over dorsum. Pedicels arranged in three distinct rows on ventral side. Papillae and pedicels lighter brown. Anus surrounded by five distinct calcareous teeth.

Ossicles are complex branched rods but without spiny branched rods.

Rods

62-100 μ long; average 90 μ

Materials examined: Three specimens

H-42, Station 1, A.S. Tan Tiu and R. Fernandez, 3-V-80

H-43, Station 1, A.S. Tan Tiu and R. Fernandez, 3-V-80

H-44, Station 5, A.S. Tan Tiu and R. Fernandez, 30-VIII-80

Distinguishing Characteristics. Teat-like protuberances surmounted by papillae on dorsum. Ossicles consist of complex branched rods with lobate branches, 62-100 μ long.

Note: The teat-like protuberances in *A. caroliniana* are absent in *A. echinites*.

On the other hand, *A. caroliniana* does not have spiny branched rods, which are distinctive of *A. echinites*.

Plate 12: *Actinopyga echinites* (Jaeger)

Fig. 1: Living specimen showing extended papillae, $\times 1/2$, no. H-39.

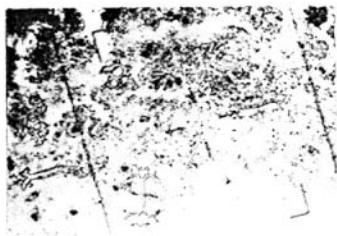


Fig. 2: Photomicrograph of ossicles, $\times 360$, no. H-39

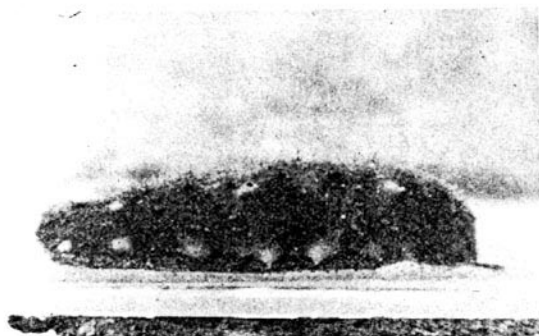
Plate 13: *Actinopyga caroliniana* sp. nov.

Fig. 1: Living specimen showing characteristic teat-like tubercles with extended papillae, $\times 1/2$, no. H-42.

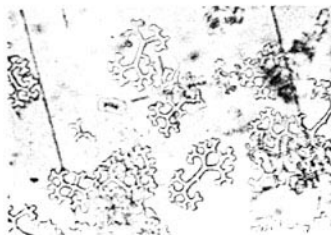


Fig. 2: Photomicrograph of ossicles, $\times 360$, no. H-42